



MINUTES OF PUBLIC DISCUSSION

for informing the citizens and relevant stakeholders about the activities for building new kindergarten in the Municipality of Bitola and presentation of the public document Initial Limited Environmental and Social impact assessment, that was maintained 21.12.2020

AGENDA

- 1. Short introduction of the Social Services Improvement Project**
Natasha Tasevska Stojanovska – Grant administration Coordinator
- 2. Kindergarten architectural projecting and presentation of the “Basic project for building new kindergarten”**
- Maja Daskalovska – architect
- 3. Presentation of the document of public interest “Initial Limited Environment and Social Impact Assessment for building new kindergarten”**
*- Slavjanka Pejchinovska Andonova
consultant for environmental and social questions*
- 4. Q&A**
- 5. Discussion**

Following the principles of citizens engagement process described in the Eenvironmental and Social Management Framework, the following steps were conducted related to the sub-project for building kindergarten in the Municipality of Bitola. The documents of public interest were published on the MLSP web site: <https://www.mtsp.gov.mk/proekt-za-podobruvanje-na-socijalnite-uslugi.nspk> and on the web site of the Municipality of Bitola <https://www.bitola.gov.mk> (07.12.2020) with the purpose to introduce the planned activities and giving the opportunity to the public for giving a feedback (remarks, comments, questions) for 14 days after publishing, using the Grievance Redress Mechanism <https://ssip.mtsp.gov.mk/ApplyRequest.aspx> or through the contact email managede by the Municipality of Bitola.

There was sufficient time for the public to familiarize with the documents of public interest so the comments would be well articulated based on true information. The invitation for participation was sent to list of contacts (NGO, kindergartens, Basic schools, municipality representatives, parents). The registered participants received a link (<https://us02web.zoom.us/j/84208855420?pwd=MVRTK2Q3b1NET2ZyMnU5aE15UjVUdz09>) for access to the public discussion that was conducted through the ZOOM platform.

In Annex 1- List of registered participants; Annex 2: Screenshots - photos made during the on-line public discussion.

The on-line public discussion started at 12.00 pm, in the following section there is a record of the discussion that took place:

Question (Violeta Nalevska – Local Economic Development and public issues in the Municipality of Bitola)

Let me express my gratitude that this project is been accepted. I would like to ask a question related to Component 1- why we don't have feedback information for not accepting our project proposal for social services development. After the process of application, we have no information of the elected projects. Although I have sent a question to the officials, I don't have any answers to this moment. The consultants that were working with us, assessed our project as very good. We should know for the gaps and mistakes that we have made, so we could make the necessary corrections for the next call.

Answer (Natasha Tasevska Stojanovska – Grant Administration Coordinator) – the selection of the projects is made by already defined and published criteria in the frames of the public call. If the project was not elected, it does not mean that it was a bad project, even one point could have influenced the final selection of the projects. On the other side, this call will be republished. You will have the opportunity for applying again, till then you have our contacts so we would surely share every information that is necessary for you for successful application in the next call.

Question – When will the kindergarten be finished ?

Answer (Maja Daskalovska, architect PMU)

In volume and cost the kindergarten will be finished in 16 months, after the permission for construction is given. The projection is that in 19 to 20 months the kindergarten will be finished. In the moment the approval for construction is not in force, it takes at least two weeks to be put in force – if there is no objection. After we have legal approval for construction, tendering procedure will be opened for the selection of the construction contractor that will last for at least three months. The deadline for construction of the kindergarten will be 16 months, so we expect in total to be finished in 20 months.

Comment (Dzala Bojkovska – NGO SEMPER)

I look forward to see the new kindergarten in Bitola, the location is perfectly chosen. It will help a lot to the parents. This is a long-standing problem in Bitola. Believe it is very hard to find a place in a kindergarten, literary the parents should apply for a place in the kindergarten instantly after the birth of their child so they could be sure that there will be a place. As a social worker I am very happy that the parents will be released in this sense.

Question (Emilija Kosturski – teacher in a High School, Counselor in the Municipality of Bitola)

Will the public procurement be conducted by the MLSP or it will be conducted by the Municipality of Bitola?

Answer (Maja Daskalovska, architect) - The whole procedure will be through the MLSP, including the equipment procurement.

Comment (Fatma Bajram Azemovska – Sumnal, Roma municipality Development Association)

This project is really important so every mother and women could function and be sure that the children are taken care for. I am participating in a project in cooperation with the Municipality of Bitola that is helping the children and the kindergarten “Prolet” . Every year the number of Roma children in the kindergartens is increased, I hope that with this kindergarten also there will be greater possibility for this population to be covered. We know the research results, only in the frames of the kindergartens and in the centers these children are covered with some kind of educational program. Also, it would be very good example if there is employee/teacher from the Roma population, it would be a good model for motivating the parents. I hope that we will continue to cooperate with the MLSP and the Municipality. We are ready to help in any open question.



Question (Radmila Cvetkovska – Association Resourcing Center of parents of children with special needs)

We know that the parents of the children with special needs by profession in one moment become *caregivers* and slowly pass into the category of poorer families. Opening kindergarten and increasing the capacities of this kind of facilities is very important, we hope that measures and standards are followed which actually provide access for people and children with disabilities and that the MLSP is planning a number of children with disabilities to be placed in this institution.

Answer (Snezhana Todorovska – Director of Public Kindergarten „Majski Cvet“)

The MLSP has done a lot about this issue. For example, in the kindergarten of ours there was hiring of defectologist and psychologist. Strong effort was made to finalize the standards for access of children with disabilities to the kindergartens.

Reply (Radmila Cvetkovska – Resourcing Center of parents of children with special needs)

As a National service we had experience with parents, and many times we have been in a position of mediator and we had to intervene because of the misunderstanding between the kindergarten staff and the parents. We don't have time to talk about this question in this discussion, but the main remark would be that the parents of children with special needs are not sure for the open possibility of institutional care. The professional services in this case are very important in the kindergartens, also maybe a campaign is necessary for changing the approach of the kindergarten staff, and informing the parents that they could apply for a place in the kindergarten. The previous experiences are not good.

Question (Fatma Bajram Azemovska – Sumnal – the Roma Municipality Development Association)

How will you achieve energetic efficiency of the object?

Answer (Maja Daskalovska, architect) - The energetic efficiency is achieved in different ways: through placement of thermal facade, external carpentry that is energetic efficient, isolation of the roof, the type of heating, collector's placement, solar collectors, floor isolation, so that the project is isolated on every side, decreasing the possibility of energy loss.

Is it planned to have cameras within the external area of the object?

The kindergarten will have cameras on the main entrances. A playground will be placed in the kindergarten yard, also external terrace for every study hall that will have direct approach to the terrace.

Comment (Emilija Kosturski – teacher in a high school, Councilor in the Municipality of Bitola)

Out of everything mostly I liked the dedication to the energetic efficiency. I am interested if you have thought for completing the conditions for easy movement of the children and people with disabilities.

Answer (Maja Daskalovska, architect)

The kindergarten is in two levels. In the interior of the object there is a ramp that enables communication between these two levels. The toilets are made without doorsteps, there will be holders for children with special needs, and the whole kindergarten will be passable for children with special needs.

Comment (Lidija Tfirst Public Kindergarten Ovadija Mara, Bitola)

I must express the satisfaction for building this new kindergarten, especially because it will help to decrease the number of children within a group. As recent caregiver I can convince you that it is very hard to work with a group with 30-32 children. The protocol we are following helped us to understand how much better is to work with a group of 15 children.

Question (Snezhana Todorovska Director Public Kindergarten “Majski Cvet”)

I have read the document for the measures of waste treatment. Is it planned in some way to treat a specific waste as the liquid kitchen waste? In the moment, as a kindergarten we have provided funds for treating the waste through external private firm that collects such waste, but we don't exactly know where this waste is finally stored or

removed. I would like the Public Communal Enterprise in cooperation with the Municipality to create a method to collect and distribute this kind of waste on a level of Municipality, covering all kindergartens.

Answer (Slavjanka Pejchinovska Andonova, consultant for environmental and social questions) –

Maybe there could be made some kind of minor project for all kindergartens and schools that prepare food and this kind of liquid waste to be transported to the current bio-power station for energy production. There is a firm in Skopje (Sunilens) that collects the liquid waste cooking oil on a state level. The oil is purified and exported to Austria for obtaining bio diesel fuel. This should be discussed with the municipality for finding a solution.

Comment (Jasminka, Municipality of Bitola)

Let me share information, very soon the Public Communal Enterprise in the frames of a project will buy special cans that will collect the liquid waste, that will be used as a compost, if its organic waste in question.

Answer (Snezhana Todorovska, director of the Public Kindergarten “Majski Cvet”)

This will not be a solution, because the waste must be organic, and this liquid waste collected by the kindergartens is not organic.



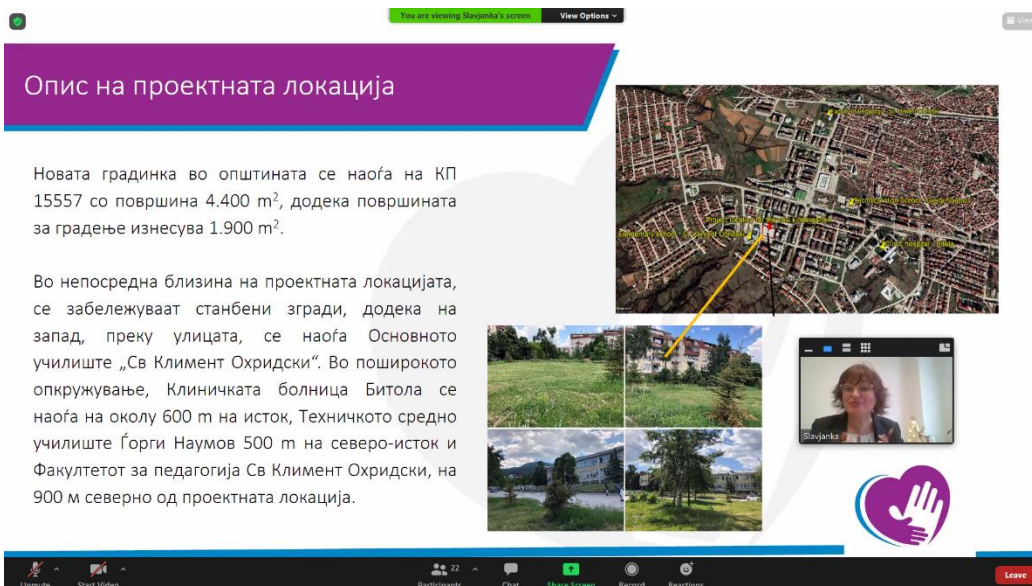
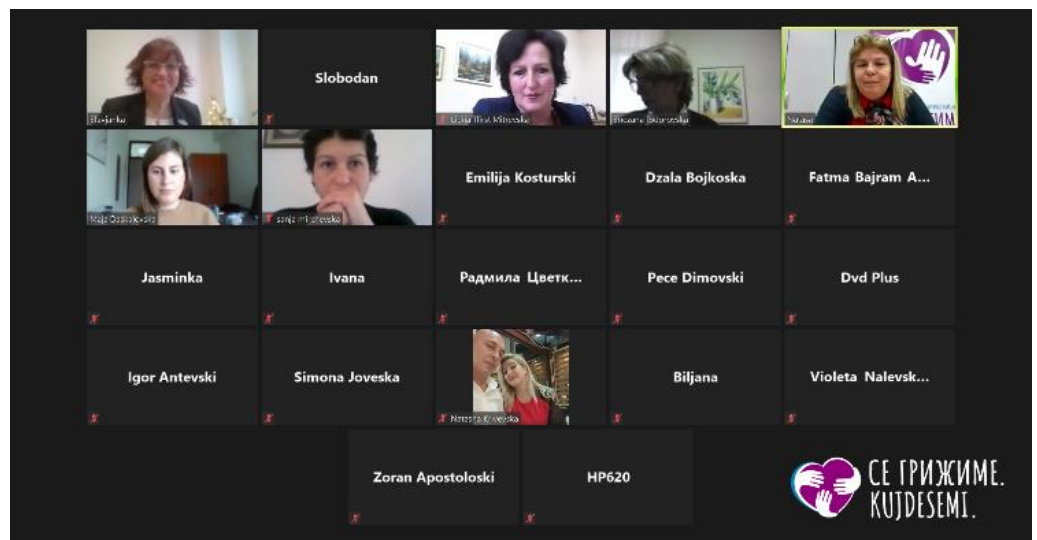
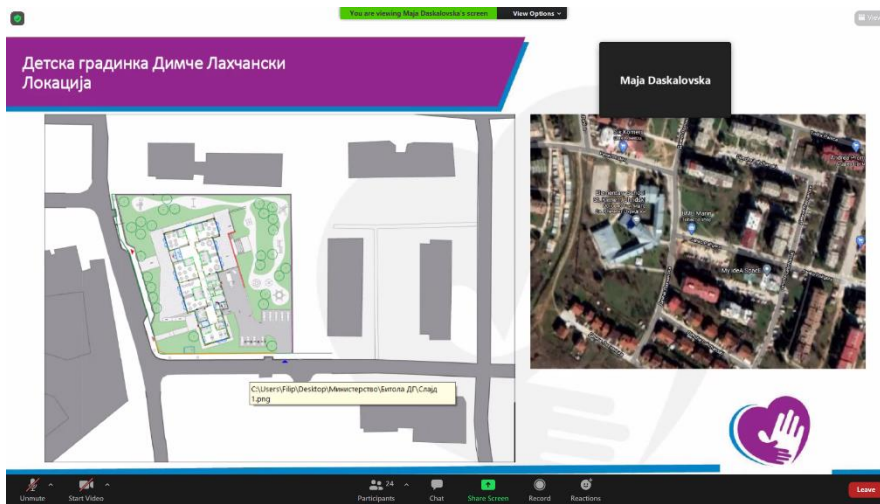
Annex 1 – List of registered participants

Timestamp	Full name	Organization/Institution/Company	Municipality	Occupation
12/11/2020 15:43:32	Gruevski Valentin	Council of the Municipality of Bitola	Bitola	Councilor for public procurements
12/12/2020 8:30:52	Zora Simjanovska	Municipality of Bitola	Bitola	Department for economic development, civil engineer
12/13/2020 12:49:24	Radmila Cvetkovska	Association Resourcing center of parents of children with special needs	Bitola	Graduated psychologist, National coordinator of the Resourcing center for parents of children with special needs
12/15/2020 10:09:08	Lidija Tfirst Mitervska	Public Kindergarten Estreja Ovadija Mara Bitola	Bitola	Director
12/16/2020 11:43:21	Violeta Nalevska	Municipality of Bitola	Bitola	Councilor for Local Economic Development and public issues
12/16/2020 11:44:34	Ivana Kjurkchieva	MLSP	Skopje	M&E
12/16/2020 11:52:19	Simona Joveska	Municipality of Bitola	Bitola	Colaborator for projects related to marginalized groups
12/16/2020 11:54:57	Peco Dimovski	Municipality Primary School,,Dr Trifun Panovski“	Bitola	History professor
12/16/2020 11:55:54	Filip Salevski	Municipality of Bitola	Bitola	Architect
12/16/2020 12:07:00	Snezhana Todorovska	Municipality Kindergarten “Majski Cvet“	Bitola	Director
12/16/2020 12:11:57	Zlatko Talevski	Municipality of Bitola	Bitola	Counciler in the department of Economic Development
12/16/2020 12:35:28	Ljubica Sterjeva	Primary School “Todor Angelevski”	Bitola	Director
12/16/2020 13:12:26	Gordana Talevska	Municipality of Bitola	Bitola	Architect
12/16/2020 13:21:40	Natasha Krivevska	Municipality Health Facility Kuzman Shapkarov - Bitola	Bitola	Accountant
12/16/2020 13:44:28	Dimovska Elizabeta	OU“Gorgi Sugarev,,	Bitola	Professor
12/16/2020 13:44:49	Angelina Kotevska	Representative of the Urban communitieis in Bitola	Bitola	MA in informatics
12/16/2020 14:48:56	Biljana Stojkovska	Primary School “Goce Delchev“	Bitola	

12/16/2020 15:30:18	Jasminka Kochankovska	Municipality of Bitola	Bitola	Psychologist
12/16/2020 15:34:24	Katerina Toshevska	Association of single parent families PART OF ALL, Bitola	Bitola	Manager of the Association
12/16/2020 15:45:41	Beti Bulakovska	Association of persons with disabilities Emanuil Plus	Bitola	unemployed
12/16/2020 17:41:06	d-r Dzala Bojkoska	Association for equal opportunities SEMPER	Bitola	d-r for social work and social policy
12/17/2020 8:11:28	marest78@yahoo.com	Centar Detelinka Plus	Bitola	Special educator
12/17/2020 10:05:54	Roza Jovanovska	Primary School, "Dame Gruev",	Bitola	Director
12/17/2020 10:26:05	Vesna Jurak	Municipality of Bitola	Bitola	
12/17/2020 16:19:22	Dijana Hristovska	Primary School "Stiv Naumov"	Bitola	Manager
12/18/2020 8:55:16	Fatma Bajram Azemovska	Sumnal – Association for the Roma Municipality Development	Bitola	NGO activist
12/17/2020 16:19:22	Dijana Hristovska	Primary School Stiv Naumov		
12/18/2020 8:55:16	Fatma Bajram Azemovska	Sumnal -Association for Roma municipality development		
12/18/2020 12:21:42	Sanja Mirchevska	Bureau for development of education		
12/18/2020 14:11:41	Fance Georgievaska	Mobilnost Bitola		
12/19/2020 12:45	Emilija Kosturski	Council of the Municipality of Bitola	Bitola	High School professor



Annex 2. Screenshots made during the public discussion, 21.12.2020



Главни влијанија врз животната средина

Фаза	Аспекти на животна средина	Општа проценка на ризикот на животната средина
Подготвителна фаза	Здравје и безбедност на работниците и заедницата (особено жителите во непосредната околина)	Локално, оптимално, значителен интензитет
Фаза на изградба	Здравје и безбедност на работниците и заедницата (особено жителите во непосредната околина)	Локално, оптимално, значителен интензитет
	Квалитет на воздух	Регионално, краткорочно, среден интензитет
	Собирање на отпад	Локално, оптимално, среден интензитет
	Бучава	Локално, долгорочно, среден интензитет
	Влијание врз водата и почвата	Локално, краткорочно, среден интензитет
Оперативна фаза	Влијание врз флората и фауната	Не се очекува влијание
	Влијание врз културното наследство	Не се очекува влијание
	Собирање на отпад	Локално, среднорочно, значителен интензитет
	Безбедност на вработените, децата и родителите на влезот, за време на престојот и излегување од објектот.	Локално, долгорочно, значителен интензитет

sanja mirchevska Maja Daskalovska

Fatma Bajram A... Pece Dimovski

Biljana Igor Antevski

Jasminka Dvd Plus

Simona Joveska Natasa Krive...

Violeta Nalevsk... Zoran Apostolo...

HP620 Slobodan

Ви благодарам на вниманието!

Menche Menche... sanja mirchevska Fatma Bajram A...

Paqenka Cibe... Pece Dimovski Biljana

Igor Antevski Dvd Plus Simona Joveska

Violeta Nalevsk... Zoran Apostolo...

HP620 Jasminka Slobodan

Активности за спроведување на проектот

- Во координација со општините се доделуваат грантови за изградба на нови детски градинки/центри за ран детски развој, односно за доградба на постоечки детски градинки/центри за ран детски развој со цел проширување на капацитети
- Во согласност со потребите на општините се доделуваат грантови за воспоставување и пружање на социјални услуги за сите ранливи категории на граѓани

Ivana

Emilija Kosturski Maja Daskalovska

Slavjanka

Participants Chat Share Screen Record Reactions

12:51 PM 12/21/2020